



HS Series Hose Saws

HS150 / HS300 / HS500 Operators Manual

SAFETY PRECAUTIONS

MODELS COVERED

This manual is applicable to different variations of the Continental HS Series Hose Saws.



SAFETY PRECAUTIONS



- READ INSTRUCTIONS AND IDENTIFY ALL COMPONENT PARTS BEFORE USING HOSE SAW.
- MOUNT THE HS150, HS300, OR HS500 HOSE SAW ON A STURDY WORKBENCH.
- ALLOW THE BLADE TO REACH FULL SPEED BEFORE STARTING A CUT.
- PERIODICALLY EXAMINE THE BLADE FOR CRACKS AND / OR BROKEN TEETH.
- REPLACE IF NECESSARY.
- KEEP BOTH HANDS AWAY FROM THE CUTTING BLADE.
- DO NOT REMOVE OR DEFEAT ANY OF THE GUARDS OR SAFETY FEATURES OF THE SAW.
- ALWAYS WEAR EYE PROTECTION, DUST MASK, AND PROTECTIVE GLOVES.

TABLE OF CONTENT

| | |
|--|----|
| SAFETY PRECAUTIONS----- | 2 |
| CONTINENTAL HS SERIES HOSE SAWS SERIES & TECHNICAL DATA----- | 4 |
| INITIAL SET UP----- | 5 |
| HS150 / HS300 / HS500 INCLUDED TOOLING----- | 6 |
| HS150 / HS300 / HS500 OPTIONAL PARTS----- | 7 |
| HS150 / HS300 / HS500 BLADE AWARENESS----- | 9 |
| HS300 / HS500 HOSE HELPER SET UP----- | 10 |
| HS150 / HS300 / HS500 HOSE BENDING PINS SET UP----- | 11 |
| HOW TO CHANGE SAW BLADE----- | 12 |
| HOW TO INSERT THE VACUUM ATTACHMENT----- | 14 |
| HOW TO INSTALL THE HS300 / HS500 MISTER HOSE ASSEMBLY----- | 15 |
| HOW TO ADJUST AIR PRESSURE & OIL DROPS----- | 17 |
| HS150 / HS300 / HS500 REPLACEMENT ACCESSORIES----- | 18 |
| COMPONENT PARTS BREAKDOWN----- | 19 |

CONTINENTAL HS SERIES HOSE SAWS & TECHNICAL DATA

These rugged, HS150 / HS300 / HS500 dependable saws offer features not found on other saws. Choose the one with the capacity and features which meet your individual requirements.



| Technical Data | HS150 | HS300 | HS500 |
|---------------------|---------------------------------|---------------------------------|---------------------------------|
| Capable of cutting: | 1-¼" (4 wire) up to 1" (6 wire) | 1-¼" (6 wire) up to 2" (2 wire) | 1-¼" (4 wire) up to 2" (6 wire) |
| Dimensions: | L: 28-¾" x W: 21" x H: 12-¼" | L: 29-¾" x W: 26-¾" x H: 16" | L: 29-¾" x W: 26-¾" x H: 16" |
| Weight: | 70 lbs | Weight: 120 lbs | Weight: 120 lbs |

| HS Model | ContiTech Part # | Voltage | Phase | Amps |
|----------|------------------|---------|-------|------|
| HS150 | 20614553 | 110 | 1 | 15 |
| HS303 | 20614554 | 230 | 3 | 20 |
| HS301 | 20614555 | 230 | 1 | 30 |
| HS503 | 20614556 | 230 | 3 | 20 |
| HS501 | 20614557 | 230 | 1 | 30 |



| HS Model | ContiTech Part # | Voltage |
|-------------|------------------|---------|
| HS150-12VDC | 20829262 | 12VDC |
| HS150-24VDC | | 24VDC |

Available HS150 Mobile Hose Saw

Ideal for on-site service where electricity is not available.
For more, information contact continental customer service.

HS150 / HS300 / HS500 INITIAL SET UP

FOLLOW THESE STEPS BEFORE YOU USE YOUR HS SERIES HOSE SAW FOR THE FIRST TIME.

- Mount your HS Series Hose Saw on a sturdy workbench in a well-lit area. Workbench should be able to support the hose saw weight.



- Check electrical circuit to be certain that it matches the hose saw requirements shown on the tag attached to the hose saw cord.

DO NOT USE AN EXTENSION CORD OR RUN FROM PORTABLE POWER SOURCES AS LOW VOLTAGE CAN DAMAGE THE MOTOR.



- Check to be certain that the blade rotates in the direction of the arrow shown on the motor housing.

Note: Blade also has a rotation arrow.



Note: New blades must be properly conditioned to assure long life and clean cuts. For the first ten cuts, feed the blade slowly through a medium size hose. This will properly break in and condition the blade for long life.



HS150 / HS300 / HS500 INCLUDED TOOLING

- **Hose Helper**

Included only for HS300 / HS500 Series.
Not available for HS150.

A “Hose Helper” attachment for the HS300 & HS500 prevents the hose from being drawn back during a cut and gives the operator the ability to more precisely control the cut length. The “Hose Helper” can be mounted on either end of the saw.



- **Hose Bending Pins**

Included for all HS150 / HS300 / HS500 Series.

Hose Bending Pins prevent the blade from binding during a cut.



- **Serrated Blade (General Purpose)**

Included for all HS150 / HS300 / HS500 Series.

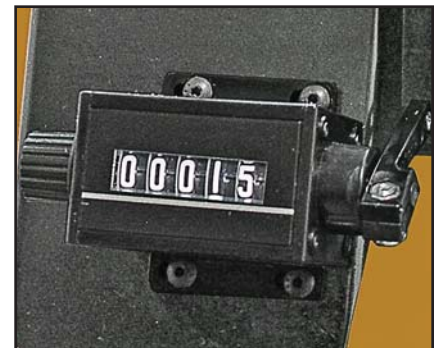
Is an aggressive, universal blade that cuts multi-spiral and braided hose very well.



- **Counter**

Included only for HS300/HS500 Series.
Not available for HS150.

A resettable counter makes it easy to keep track of the number of cuts made.



- **1 ¼" Vacuum Adapter**

(For 2 ½" shop vac, or vacuum accessories).

Included for all HS150 / HS300 / HS500 Series.

Vacuum port allow attachment of vacuum system to keep saw and work space clean.



HS150 / HS300 / HS500 OPTIONAL PARTS

- **Mister Hose Assembly**

Optional only for HS300 / HS500 Series.
Not available for HS150.

The mister sprays a fine mist of air tool oil on the saw blade for longer blade life and cleaner cuts.



- **Hose Channel System**

Available in 5 foot sections only for HS300 / HS500 Series.

The Hose Channel System both measures and supports the hoses up to 2 inch diameter as they are being cut.



- **Mobile Cart**

Optional for all HS150 / HS300 / HS500 Series.

HS hose saw model, can be mounted on the mobile cart for easy moving around the shop.

Mobile Cart comes with (2) lockable swivel casters.



The HS500-1 Series hose saw is shown, mounted on the mobile cart with the hose helper and hose channel installed.



HS150 / HS300 / HS500 OPTIONAL PARTS

- **Scalloped Blade (General Purpose)**

Available for all HS150 / HS300 / HS500 Series.



- **Double Bevel Blade with SS Slots**

Available for all HS150 / HS300 / HS500 Series.



| Hose Saw Model | Blade Type | ContiTech Part # | Blade Size Diameter | Arbor Size | Alternative Part # |
|----------------|--------------------------------------|------------------|---------------------|------------|--------------------|
| HS150 | Serrated (Included) | 20683699 | 10 inch | 1 inch | |
| | Scalloped (Available) | | 10 inch | 1 inch | 104034 |
| | Double Bevel w/ SS Slots (Available) | 20804794 | 10 inch | 1 inch | |
| HS300 & HS500 | Serrated (Included) | 20922988 | 12 inch | 1 inch | |
| | Scalloped (Available) | 20683700 | 12 inch | 1 inch | |
| | Double Bevel w/ SS Slots (Available) | | 12 inch | 1 inch | 102210 |

For more information on products, contact Continental customer service.

HS150 / HS300 / HS500 BLADE AWARENESS

Note: New blades must be properly conditioned to assure long life and clean cuts. For the first ten cuts, feed the blade slowly through a medium size hose. this will properly break in and condition the blade for long life.

Note: The hose should begin to bend before contacting the blade. This will increase blade life and keep the hose from tearing and deforming.

Note: Once the blade and motor reach full RPM apply steady downward pressure on the handle in order to force the hose into the blade. Do not apply enough force to stall the blade, and ease up on the pressure before the blade completes the cut. This will keep from separating the wires as the blade exits the hose.

Note: The edges of the blade may appear to be dull. This does not mean that the blade is not effective.

As long as the blade is still giving clean cuts, do not replace the blade.

NOTE: PAY CLOSE ATTENTION TO THE DIRECTION OF ROTATION MARKED ON THE SERRATED BLADE.

IT IS THE OPPOSITE OF MOST BLADES OF THIS TYPE.

CAUTION: Cracks can cause extremely damage to the blade, periodically examine the blade for cracks and / or broken teeth.



Serrated Blade



Scalloped Blade



Double Bevel w/SS Slots Blade

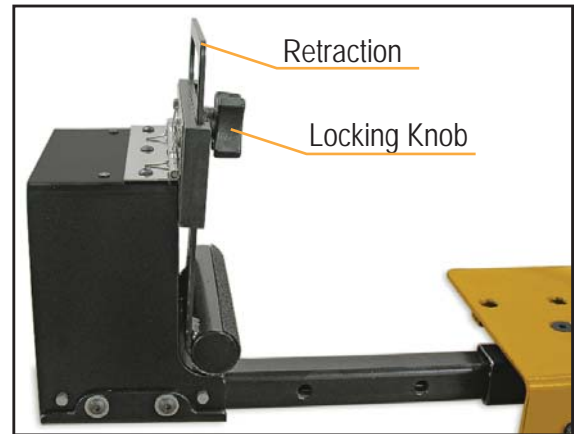


Damaged Blade

HS300 / HS500 HOSE HELPER SET UP

Step 1

To set hose helper, loosen locking knob and lift the retraction.



Step 2

Feed the hose through from the rear end, and set retraction a slight angle and tighten locking knob.

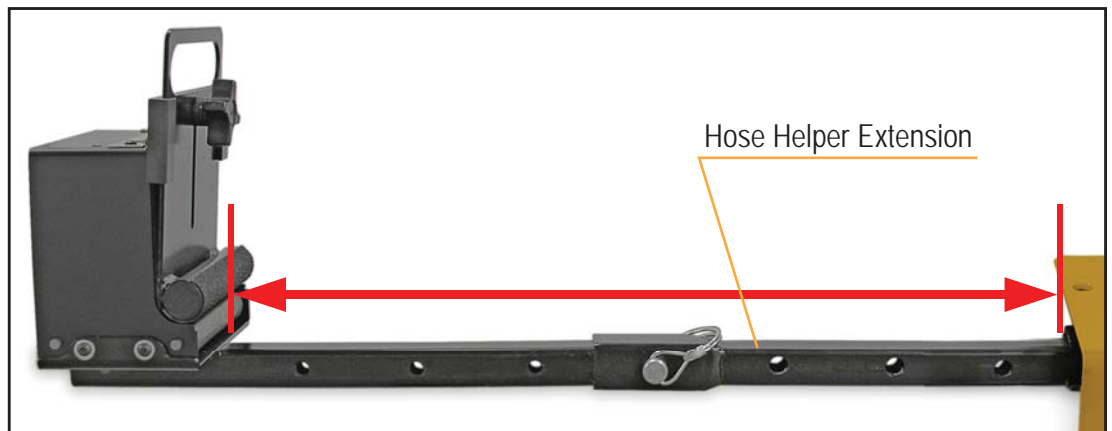
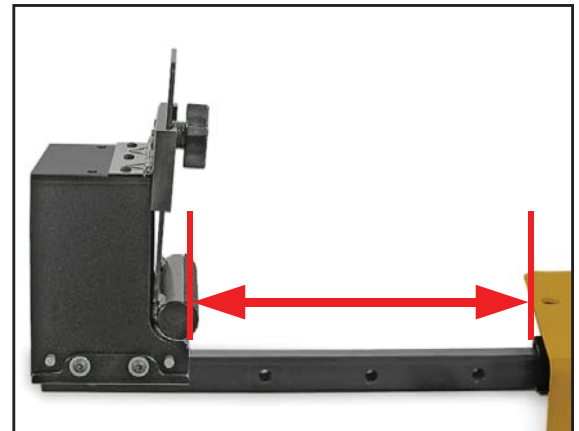
This will prevent hose from back feeding from cutting area.



Extra Features of the Hose Helper

The hose helper has multi mounting positions, can be adjusted up to 10" away from hose saw base.

With the hose helper extension attached, can be adjusted up to 22" away from the hose saw base.



HS150 / HS300 / HS500 HOSE BENDING PINS SET UP

Hose Bending Pins Set UP

All the HS150 / HS300 / HS500 series hose saws have a “Hose Bending Pins Position” decal placed on top of the hose saw.

Step 1

Position the hose bending pins according to the hose size.

For example for a 1/2 inch hose, position the pins in the hole closest to the blade.

Note: Pins **MUST** be positioned in the holes in the saw table such that the hose opens slightly during the cut. Spread the pins further apart for larger hoses.

Step 2

Turn on the hose saw, apply steady downward pressure on the handle in order to force the hose into the blade.

As you making a cut, the hose bending pins will allow the hose to bend as shown in the picture, this will minimize the friction during the cut.

Step 3

For a (larger) 2 inch hose, position the pins further out as shown in the picture.



HOW TO CHANGE THE SAW BLADE

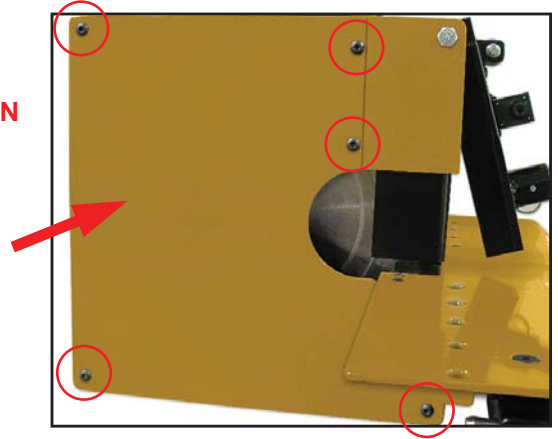
Step 1

MAKE CERTAIN THAT THE HOSE SAW IS TURNED OFF AND UNPLUG IT.

WEAR SAFETY GLASSES AND PROTECTIVE GLOVES AT ALL TIMES WHEN CHANGING SAW BLADE AND OPERATING THE HOSE SAW.

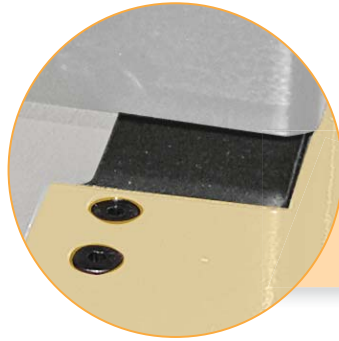
Step 2

Use a 5/32 inch Allen wrench to remove the 5 screws, and the side access panel.



Step 3

Use 1/8 inch Allen wrench to remove the 2 screws, and the Black Saw Blade Access Panel to provide clearance to remove the blade.



Step 4

For HS150 series, use a 1" wrench.
For HS300 / HS500 series, use a 1-1/4" wrench to keep the Motor Shaft Arbor in place.

Note: there is a notch on the motor shaft arbor where the wrench falls into place.



Step 5

Use a 1-1/2" wrench or an adjustable wrench to lose the Hex Jam Nut, remove it and the Blade Grip as well.

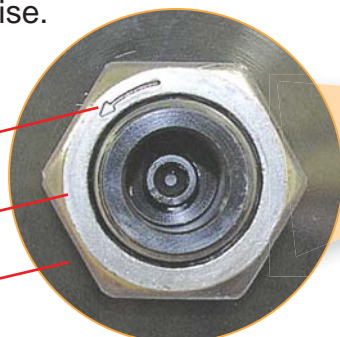
Note: Pay close attention to the tighten rotation arrow on the hex jam nut, this is a left handed hex jam nut.

Note: To lose the hex jam nut would be clockwise, and to tighten it would be counter-clockwise.

Tighten Rotation Arrow

Hex Jam Nut

Blade Grip



HOW TO CHANGE THE SAW BLADE

Step 6

Remove the old blade.

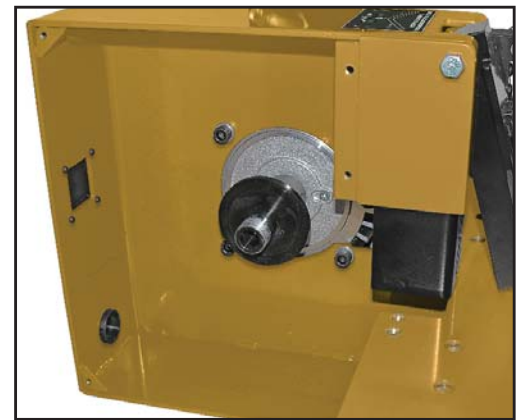
Note: Be careful when removing the old blade.

Note: Always wear safety glasses and protective gloves when changing blade and operating the hose saw.



Step 7

Use an air gun or a clean rag to clean the inside to remove any debris.



Step 8

Make certain that the new blade does not have any broken teeth, cracks or any other damage before installing.



Step 9

Before installing the new blade, if the blade has a rotation arrow make certain that the blade is installed so that it rotates in the direction of the arrow.

Note: Once the new blade is installed, repeat the process in reverse order to install all the parts back on the hose saw.

Note: To lose the hex jam nut would be clockwise, and to tighten it would be counter-clockwise.



DO NOT OPERATE THE SAW WITHOUT
ALL OF THE GUARDS IN PLACE

HOW TO INSERT THE VACUUM ATTACHMENT

Step 1

MAKE CERTAIN THAT THE HOSE SAW IS TURNED OFF AND UNPLUG IT.

WEAR SAFETY GLASSES AND PROTECTIVE GLOVES AT ALL TIMES WHEN OPERATING THE HOSE SAW.

- 1 ¼" Vacuum Port located on rear of hose saw.
Available in all HS150 / HS300 / HS500 Series.

Note: Do not recommend using at the same time as Mister.

Step 2

Remove Plastic Plug (A).



Step 3

Insert supplied 1 ¼" Vacuum Attachment (B).
(For 2 ½" shop vac, or vacuum accessories).



Step 4

Run vacuum during cutting process.



HOW TO INSTALL THE HS300 / HS500 MISTER HOSE ASSEMBLY

Step 1

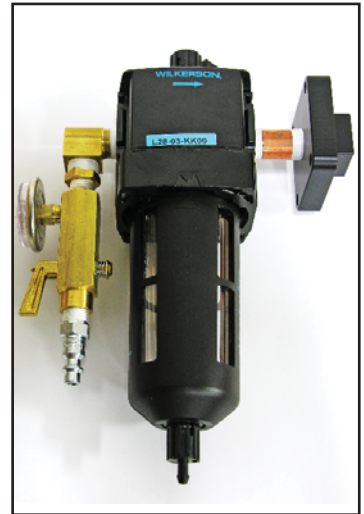
MAKE CERTAIN THAT THE HOSE SAW IS TURNED OFF AND UNPLUG IT.

WEAR SAFETY GLASSES AND PROTECTIVE GLOVES AT ALL TIMES WHEN INSTALLING THE MISTER HOSE ASSEMBLY AND OPERATING THE HOSE SAW.

The following procedures can be used to install the Mister Hose Assembly on the HS300 / HS500 Series hose saws. (Not available for HS150 Series).

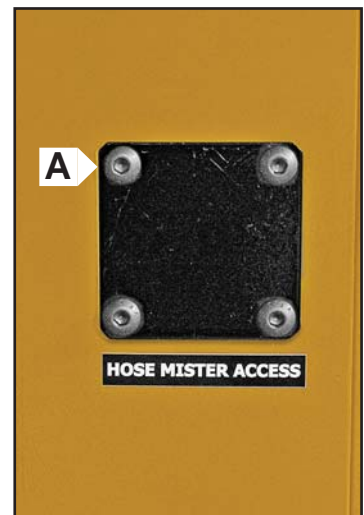
Step 2

Remove the HS300 / HS500 Mister Hose Assembly from its packaging and verify that all components are properly installed and all fittings are securely tightened as shown, and then follow the steps below to install the Mister Hose Assembly.



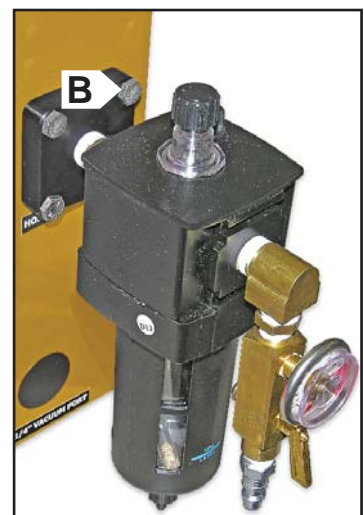
Step 3

Verify that the hose saw is turned off and unplugged. Remove the bolts and black cover from the Hose Mister Access (A).



Step 4

Insert the Hose Manifold Mister into the Hose Mister Access, and secure it with the 1/4 - 20 x 3/4" Hex Bolts provided (B).



HOW TO INSTALL THE HS300 / HS500 MISTER HOSE ASSEMBLY

Step 5

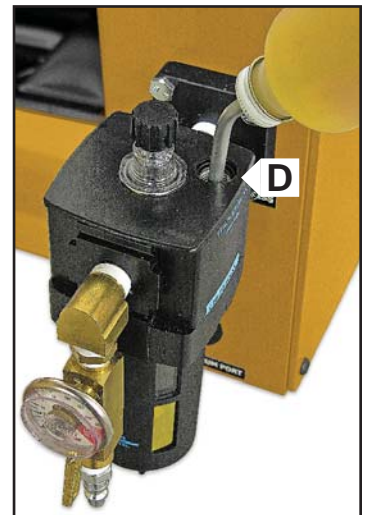
Remove the Fill Plug located on the top of the Mister Lubricator (C).



Step 6

Pour 1 bottle of 4 oz of mister oil into the fill port (D). Then thread the Fill Plug back in.

Note: 2 bottles of 4 oz of mister oil are included, please note reservoir only holds 4 oz (Mister Oil part number P/N:104156).



HOW TO ADJUST AIR PRESSURE & OIL DROPS

Step 1

MAKE CERTAIN THAT THE HOSE SAW IS TURNED OFF AND UNPLUG IT.

WEAR SAFETY GLASSES AND PROTECTIVE GLOVES AT ALL TIMES WHEN INSTALLING THE MISTER HOSE ASSEMBLY AND OPERATING THE HOSE SAW.

Step 2

Use a 5/32 inch Allen wrench to remove the 5 screws, and the side access panel (E).

Step 3

Connect air line using quick connect (F).

Step 4

Set air pressure by adjusting valve on the air regulator (G).

Step 5

Adjust the oil drops (H) so that after approximately 10 seconds you see a small film appear onto the hose saw blade (I).

Note: If the sound of the air going against the blade is too loud, reduce the air pressure and increase the oil drop. Adjust the air pressure to a more comfortable level, then verify that you are getting your small film coverage in approximately 10 seconds.

Step 6

When the hose saw is not in use you can turn off the mister by either option:

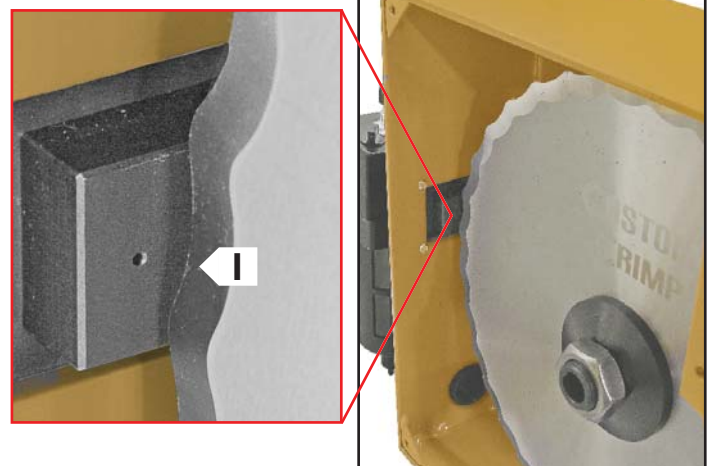
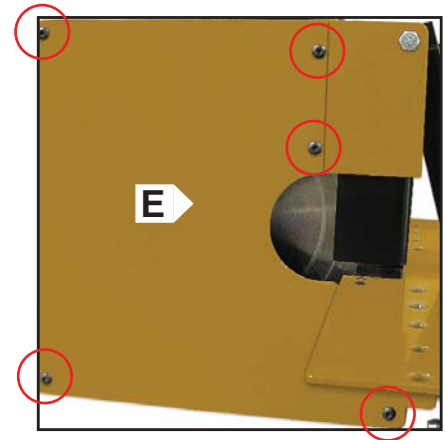
A. Un-hook the air disconnect (this allows you not to have to adjust the air pressure each time).

B. Turn off the air regulator (If you use this option we recommend making a mark on your air pressure gage to show what the desired setting is for quick setup).

Step 7

Place the side panel and tighten the bolts back on the hose saw.

The installation and setup of the Mister Hose Assembly have been completed.



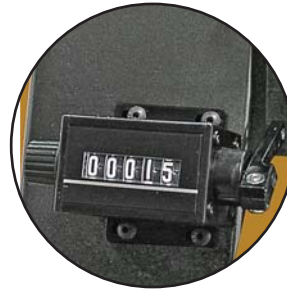
HS150 / HS300 / HS500 REPLACEMENT PARTS



Hose Helper



Hose Bending Pins



Hose Saw Counter



Mister Hose Assembly



Hose Channel System



Mobile Cart



Vacuum Attachment



Serrated Blade



Scalloped Blade

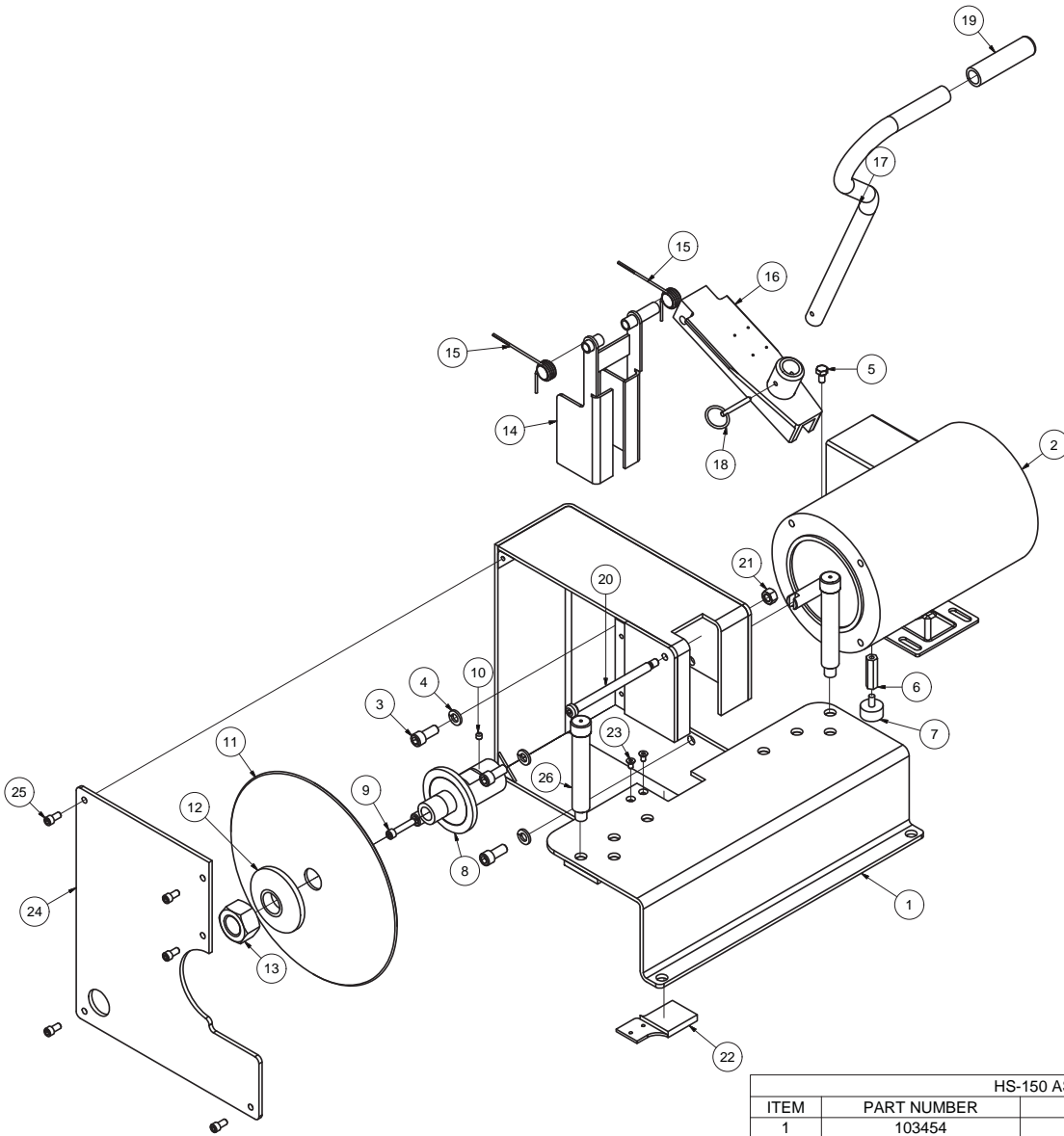


Double Bevel w/
SS Slots Blade

| Hose Saw Model | Blade Type | ContiTech Part # | Blade Size Diameter | Arbor Size | Alternative Part # |
|----------------|--------------------------------------|------------------|---------------------|------------|--------------------|
| HS150 | Serrated (Included) | 20683699 | 10 inch | 1 inch | |
| | Scalloped (Available) | | 10 inch | 1 inch | 104034 |
| | Double Bevel w/ SS Slots (Available) | 20804794 | 10 inch | 1 inch | |
| HS300 & HS500 | Serrated (Included) | 20922988 | 12 inch | 1 inch | |
| | Scalloped (Available) | 20683700 | 12 inch | 1 inch | |
| | Double Bevel w/ SS Slots (Available) | | 12 inch | 1 inch | 102210 |

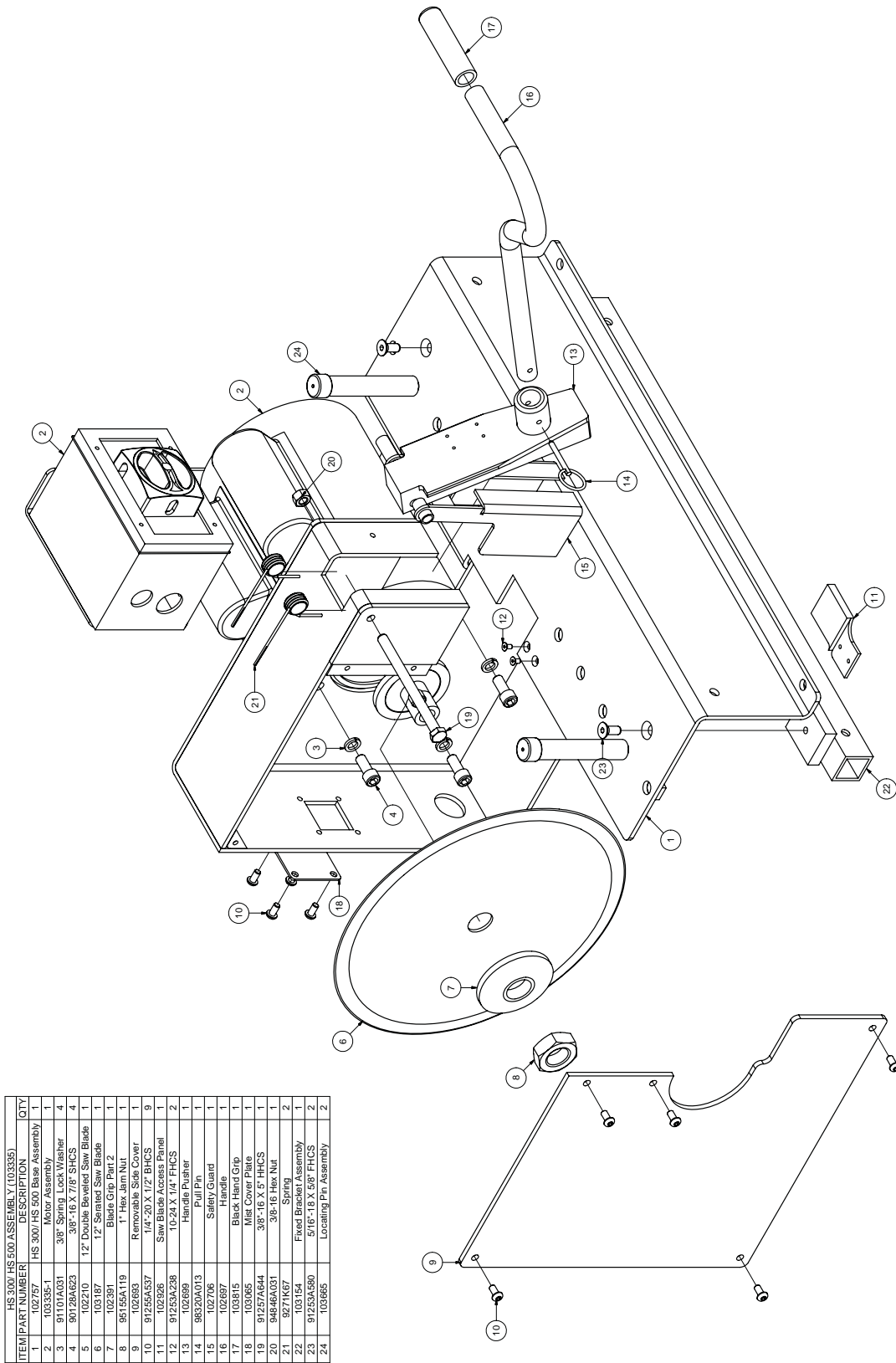
For more information on products, contact Continental customer service.

COMPONENT PARTS BREAKDOWN



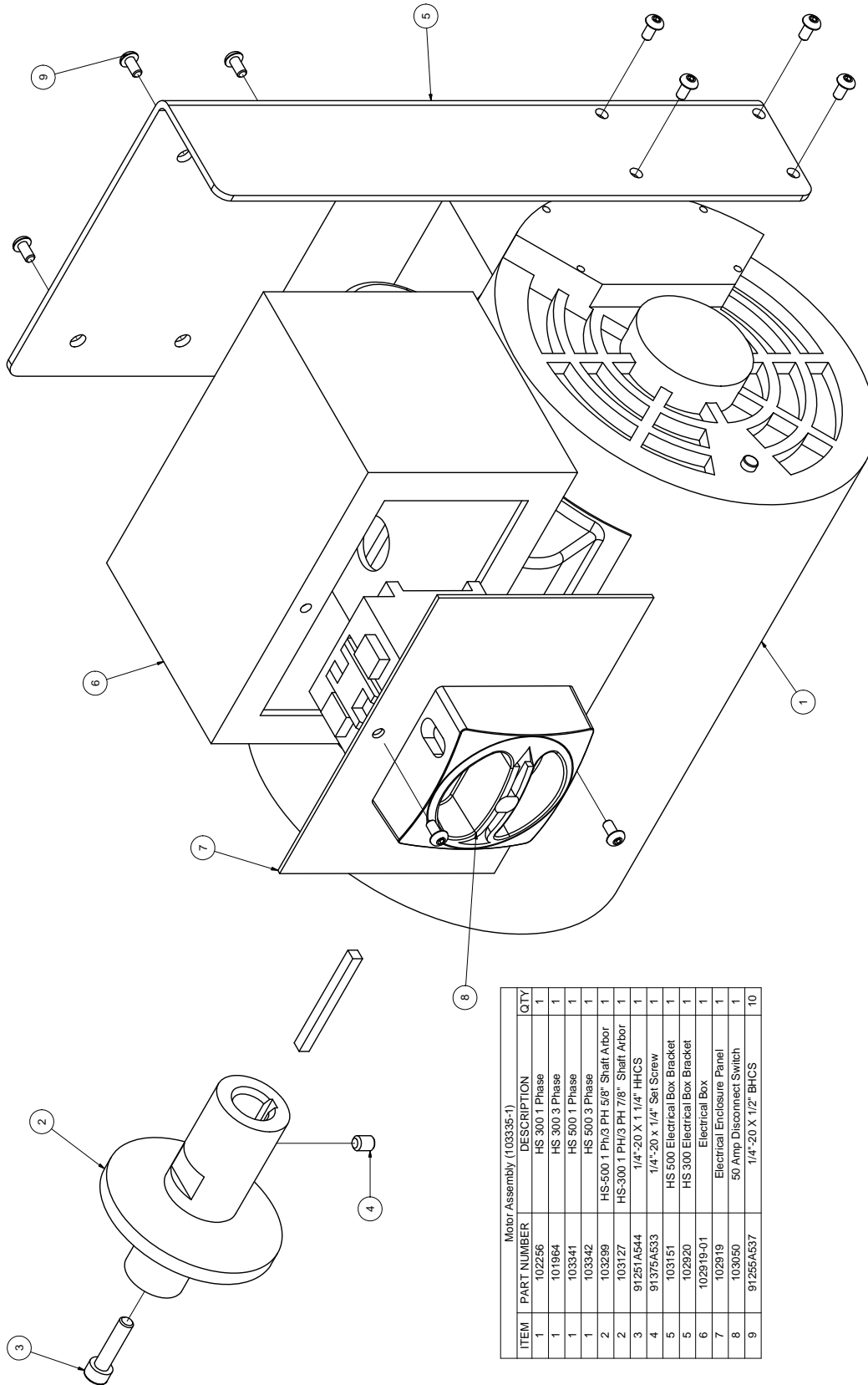
| HS-150 ASSEMBLY (103734) | | | |
|--------------------------|-------------|---------------------------------------|-----|
| ITEM | PART NUMBER | DESCRIPTION | QTY |
| 1 | 103454 | HS150 BASE ASSEMBLY | 1 |
| 2 | 103814 | 1 HP 110V 3600RPM MOTOR | 1 |
| 3 | 91251A623 | 3/8-16 X 7/8 SHCS | 4 |
| 4 | 91101A031 | 3/8 LOCK WASHER | 4 |
| 5 | 92620A537 | 1/4-20 X 1/2 HHS | 1 |
| 6 | 92230A330 | 1/4-20 X 1-1/2" HEX STANDOFF | 1 |
| 7 | 103774 | 1/4-20 RUBBER VIBRATION FOOT | 1 |
| 8 | 103299 | HS-150 5/8" MOTOR SHAFT ARBOR | 1 |
| 8 | 103127 | HS-300/500 5/8" MOTOR SHAFT ARBOR | 1 |
| 9 | 91251A544 | 1/4-20 X 1 1/4 SHCS | 1 |
| 10 | 91375A533 | 1/4-20 X 1/4 SET SCREW | 1 |
| 11 | 103502 | 10 INCH SERRATED BLADE | 1 |
| 12 | 102391 | HS-150/300/500 BLADE GRIP | 1 |
| 13 | 90083A260 | 1/14 LEFT HAND JAM NUT | 1 |
| 14 | 102706 | HS-150/300/500 SAFETY GUARD ASSEMBLY | 1 |
| 15 | 9271K67-CCW | CCW TORSION SPRING - RIGHT SIDE | 1 |
| 15 | 9271K67-CW | CW TORSION SPRING - LEFT SIDE | 2 |
| 16 | 102699 | HS-150/300/500 PUSHER BASE | 1 |
| 17 | 102697 | HS-150/300/500 HANDLE | 1 |
| 18 | 98320A013 | 3/16 X 1.3 PULL PIN | 1 |
| 19 | 103815 | BLACK HAND GRIP | 1 |
| 20 | 91247A644 | 3/8-16 X 4 1/2 SHOULDER SHCS | 1 |
| 21 | 90566A031 | 3/8 NYLOC JAM NUT | 1 |
| 22 | 102926 | HS-150/300/500 SAW BLADE ACCESS PANEL | 1 |
| 23 | 91253A240 | 10-24 X 3/8 FHCS | 2 |
| 24 | 103476 | HS150 ACCESS PANEL | 1 |
| 25 | 91306A375 | 1/4-20 X 1/2 SHCS | 5 |
| 26 | 103665 | HS-150/300/500 LOCATING PIN ASSEMBLY | 2 |

COMPONENT PARTS BREAKDOWN



| ITEM PART NUMBER | DESCRIPTION | QTY |
|------------------|-------------------------------|-----|
| 1 | HS 3000/HS 5000 Base Assembly | 1 |
| 2 | Motor Assembly | 1 |
| 3 | 3/8" Spring Lock Washer | 4 |
| 4 | 3/8" - 16 X 7/8" SHCS | 4 |
| 5 | 12" Double Beveled Saw Blade | 1 |
| 6 | 12" Serrated Saw Blade | 1 |
| 7 | Blade Grip Part 2 | 1 |
| 8 | Hex Jam Nut | 1 |
| 9 | Hex Jam Nut | 1 |
| 10 | Hex Jam Nut | 1 |
| 11 | Hex Jam Nut | 1 |
| 12 | Saw Blade Access Panel | 1 |
| 13 | 10-24 X 1/4" FHCS | 2 |
| 14 | 10-24 X 1/4" FHCS | 2 |
| 15 | 10-24 X 1/4" FHCS | 1 |
| 16 | 10-24 X 1/4" FHCS | 1 |
| 17 | 10-24 X 1/4" FHCS | 1 |
| 18 | 10-24 X 1/4" FHCS | 1 |
| 19 | 10-24 X 1/4" FHCS | 1 |
| 20 | 10-24 X 1/4" FHCS | 1 |
| 21 | 10-24 X 1/4" FHCS | 1 |
| 22 | 10-24 X 1/4" FHCS | 1 |
| 23 | 10-24 X 1/4" FHCS | 1 |
| 24 | 10-24 X 1/4" FHCS | 2 |

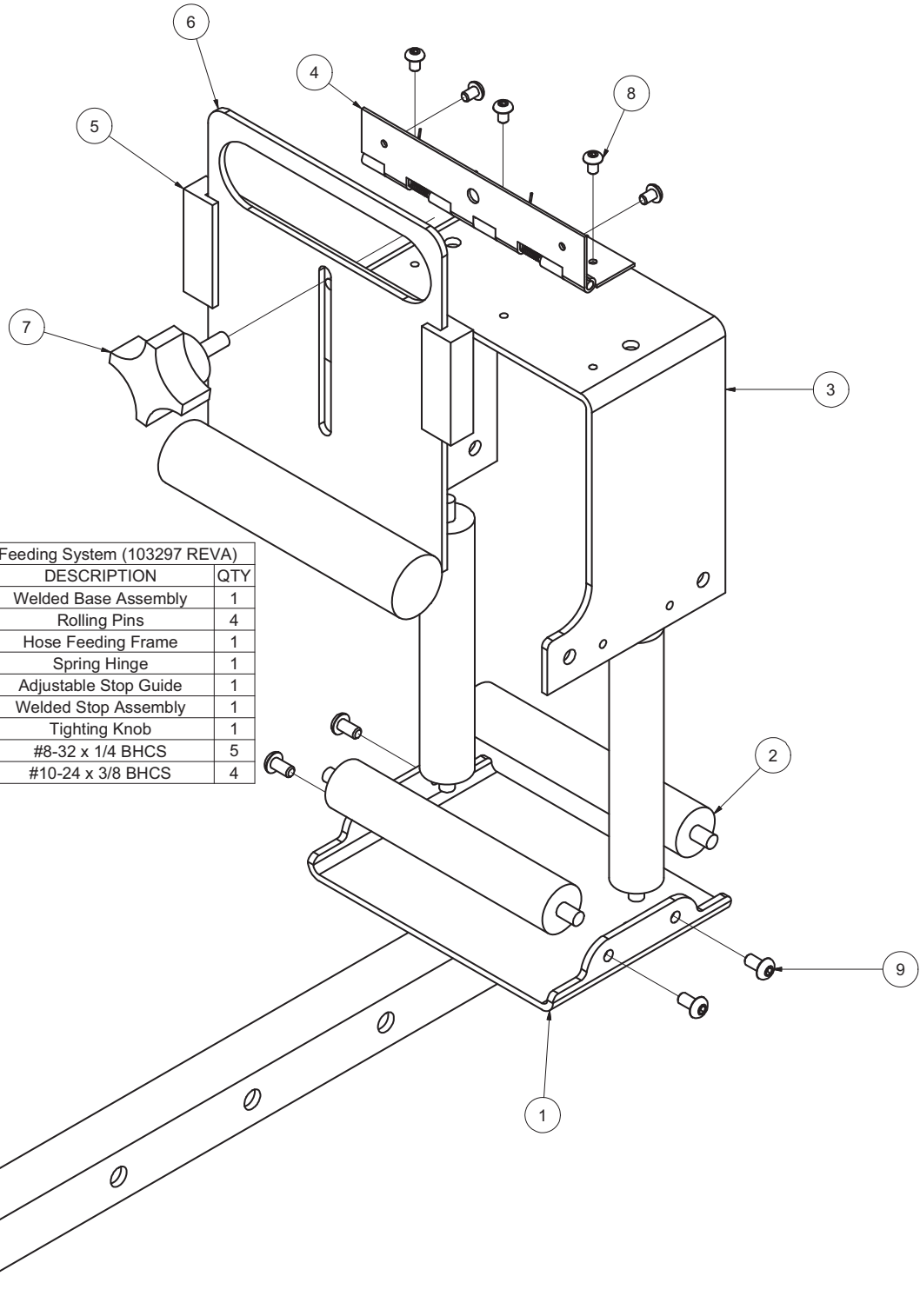
COMPONENT PARTS BREAKDOWN



Motor Assembly (103335-1)

| ITEM | PART NUMBER | DESCRIPTION | QTY |
|------|-------------|-----------------------------------|-----|
| 1 | 102256 | HS 300 1 Phase | 1 |
| 1 | 101964 | HS 300 3 Phase | 1 |
| 1 | 103341 | HS 500 1 Phase | 1 |
| 1 | 103342 | HS 500 3 Phase | 1 |
| 2 | 103269 | HS-500 1 PH/3 PH 5/8" Shaft Arbor | 1 |
| 3 | 91251A544 | HS-300 1 PH/3 PH 7/8" Shaft Arbor | 1 |
| 4 | 91375A533 | 1/4"-20 x 1/4" HHCS | 1 |
| 5 | 103151 | 1/4"-20 x 1/4" Set Screw | 1 |
| 5 | 102920 | HS 500 Electrical Box Bracket | 1 |
| 5 | 102920 | HS 300 Electrical Box Bracket | 1 |
| 6 | 102919-01 | Electrical Box | 1 |
| 7 | 102919 | Electrical Enclosure Panel | 1 |
| 8 | 103060 | 50 Amp Disconnect Switch | 1 |
| 9 | 91255A537 | 1/4"-20 X 1/2" BHCS | 10 |

COMPONENT PARTS BREAKDOWN



| HS 300/ HS 500 Hose Feeding System (103297 REVA) | | | |
|--|-------------|-----------------------|-----|
| ITEM | PART NUMBER | DESCRIPTION | QTY |
| 1 | 103153 | Welded Base Assembly | 1 |
| 2 | 103824 | Rolling Pins | 4 |
| 3 | 102965-01 | Hose Feeding Frame | 1 |
| 4 | 15205A14 | Spring Hinge | 1 |
| 5 | 103047 | Adjustable Stop Guide | 1 |
| 6 | 103152 | Welded Stop Assembly | 1 |
| 7 | 5993K51 | Tighting Knob | 1 |
| 8 | 91255A190 | #8-32 x 1/4 BHCS | 5 |
| 9 | 91255A240 | #10-24 x 3/8 BHCS | 4 |

ContiTech



Contact

ContiTech AG
NAFTA Headquarters
703 S. Cleveland Massillon Road
Fairlawn, OH 44333-3023 U.S.A.
1-800-235-4632

Canada

1-888-275-4397
FAX 1-888-464-4397

Mexico

1-800-439-7373
FAX 1-800-062-0918

Germany

+49 (0)511 938 02
mailservice@contitech.de

www.contitech.us

ContiTech. Engineering Next Level

As a division of the Continental Group, ContiTech is a recognized innovation and technology leader in natural rubber and plastics. As an industry partner with a firm future ahead of us, we engineer solutions both with and for our customers around the world. Our bespoke solutions are specially tailored to meet the needs of the market. With extensive expertise in materials and processes, we are able to develop cutting-edge technologies while ensuring we make responsible use of resources. We are quick to respond to important technological trends, such as function integration, lightweight engineering and the reduction of complexity, and offer a range of relevant products and services. That way, when you need us, you'll find we're already there.